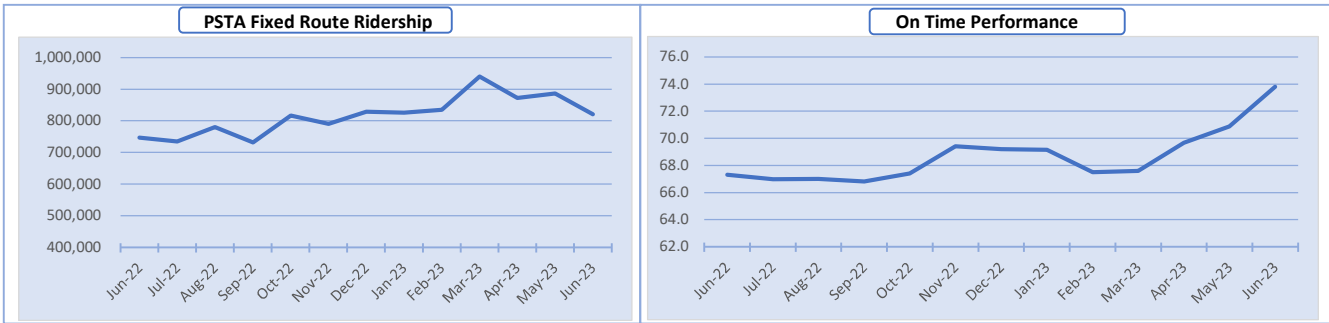




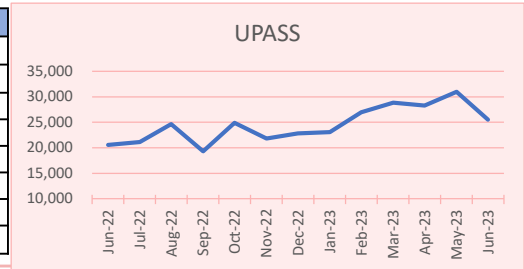
Board Report June 2023

At a Glance
On the Saturday of the PRIDE parade, we had 12% higher ridership across the system and 37% higher ridership on the SunRunner



Ridership	This month	Prior year month	% Change	YTD	Prior YTD	% Change
PSTA Local Bus	689,338	710,642	-3%	6,504,066	5,920,401	10%
SunRunner	98,978	0	N/A	787,756	0	N/A
Jolley Trolley	27,260	31,163	-13%	269,241	255,503	5%
Looper	4,598	4,557	1%	51,248	43,012	19%
Total Fixed Route	820,174	746,362	10%	7,612,311	6,218,916	22%
PSTA Access	38,195	31,089	23%	321,895	261,988	23%
¹ Other Mobility	4,737	2,337	103%	34,147	24,346	40%
Total Passenger Trips	863,106	779,788	11%	7,968,353	6,505,250	22%

Monthly Metrics	This month	Prior year month	% Change
² Flamingo Adoption	34%	28%	20%
³ Avg. Weekday Trips	31,679	29,106	9%
Avg. Saturday Trips	25,795	21,203	22%
Avg. Sunday Trips	15,744	13,663	15%
Fixed Route Complaints/100K trips	34.8	16.2	115%
Access Complaints/100K trips	104.7	38.6	171%
Security Incidents	81	52	56%
⁴ Severe Incidents	13	3	333%



Types of Trips	This month	Prior year month	% Change	YTD	Prior YTD	% Change
Wheelchair	3,078	3,791	-19%	33,993	29,301	16%
Bikes	21,371	26,920	-21%	205,488	192,485	7%
TD Discount Pass	126,340	120,228	5%	1,182,380	1,090,176	8%
UPASS	25,520	20,548	24%	233,221	164,947	41%
Farebox Trips	366,496	406,145	-10%	3,616,994	3,162,617	14%
Flamingo App Trips	53,485	48,320	11%	504,374	388,247	30%
Contactless Payment	7,629	0	N/A	31,565	0	N/A
Flamingo Card Trips	182,907	161,639	13%	1,703,144	1,565,547	9%
Total Flamingo Trips	244,021	209,959	16%	2,239,083	1,953,794	15%

PSTA Operating Statistics	This month	Prior year month	% Change	YTD	Prior YTD	% Change
On Time Performance	73.8	67.3	10%	69.4	67.3	3%
Total Miles	890,720	852,162	5%	7,971,073	7,382,226	8%
Total Hours	59,224	57,724	3%	533,769	504,697	6%
Miles per Roadcall	32,990	16,388	101%	21,087	19,649	7%
Bus Diesel Fuel Gallons	198,234	190,211	4%	1,662,879	1,616,319	3%
E-Bus Kilowatt Hours	24,253	29,162	-17%	209,962	158,475	32%
Accidents - Total/100K Miles	3.70	5.40	-31%	4.49	4.59	-2%
Accidents - preventable/100K Miles	0.90	1.76	-49%	1.57	1.41	11%

¹ Other Mobility includes Late Shift, Direct Connect, Healthy Hop and Urgent Day
² Flamingo trips divided by total APC trips
³ Avg trips for each day type is for all modes (bus, contracted service, and PSTA Access)
⁴ Severe incident definition: Events involving physical + verbal + weapon present
 APC data validated and approved by FTA for NTD reporting.

*Data contained in this report is considered DRAFT until FTA validation and final acceptance of PSTA's annual National Transit Database Report.